

Lillian Kaupang
Sektorutvikling, Opplæring og folkehelse

Scandinavian Days Education Forum, 25.05.2022



Vestfold og Telemark
FYLKESKOMMUNE

Collaboration on learning environment – for increased learning outcomes





Vestfold and Telemark County

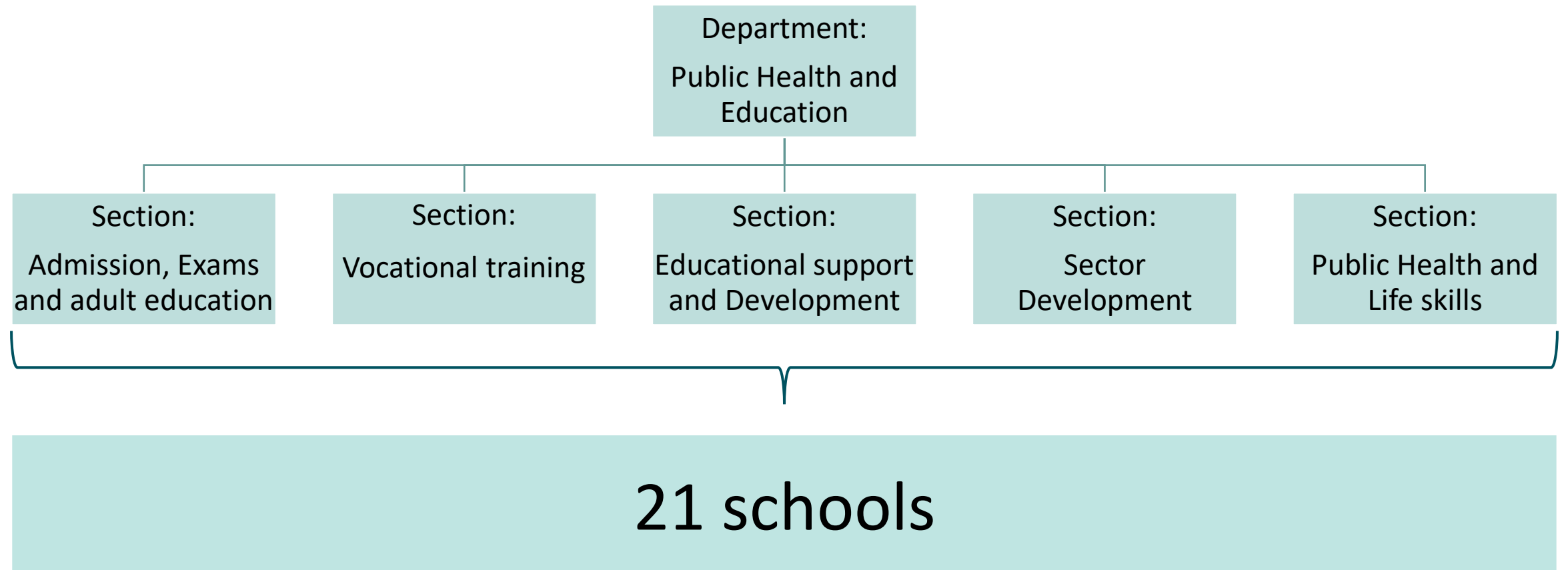




Kilder: Kartverket, kommunene. SSB, folketall



Department of Education, Vestfold and Telemark County Council – the Administration



Goals for Upper secondary Education of Vestfold and Telemark

*increased implementation
of education with planned
competence*

*increased learning
outcomes*

increased life skills

”

In short, the learning environment is everything in a school – but the teaching.

If the students are to receive good teaching, then the learning environment must be good.

Professor Thomas Nordahl



Two formal arenas for collaboration on learning environment





- **Management dialogue (styringsdialog)**

- Two formal meetings a year
- **Participants:** The director of Department and some of his team, the Principal, management at the school, employee representatives, sometimes students

- **Agenda:** Areas where the schools succeed, why they succeed, the challenges, learning environment, their need for support, the schools's plan for development (2 years plan), economy and management (only in the autumn).



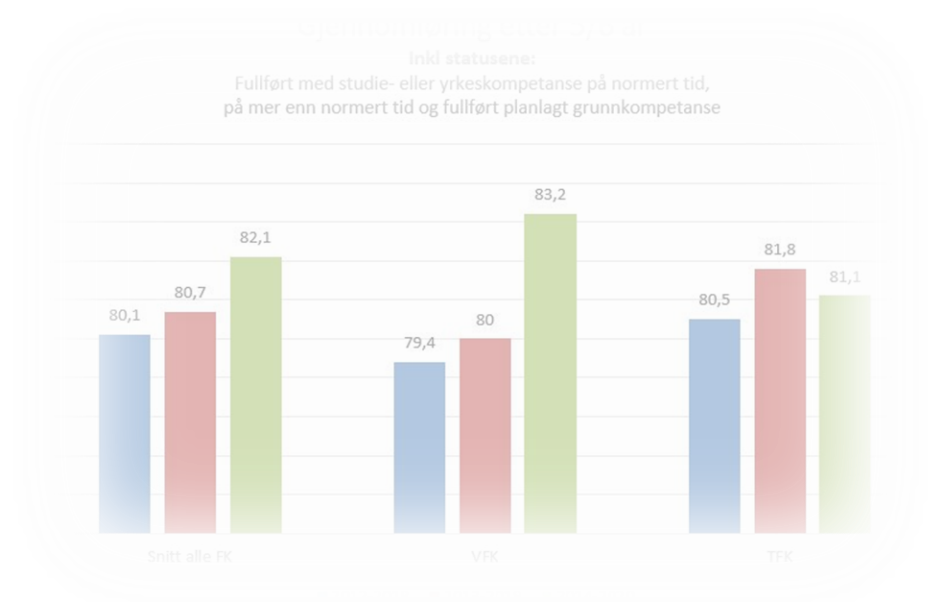
- **School environment committee (SU-SMU)**
- Five formal meetings a year
- **Participants:** Students, the Principal, employee representatives, representative from the school owner

- **Agenda:** Learning environment and cases related to administrative matters
- **The role of the school environment committee:** Advices the Principal in all matters related to the learning environment and matters related to the running of the school.



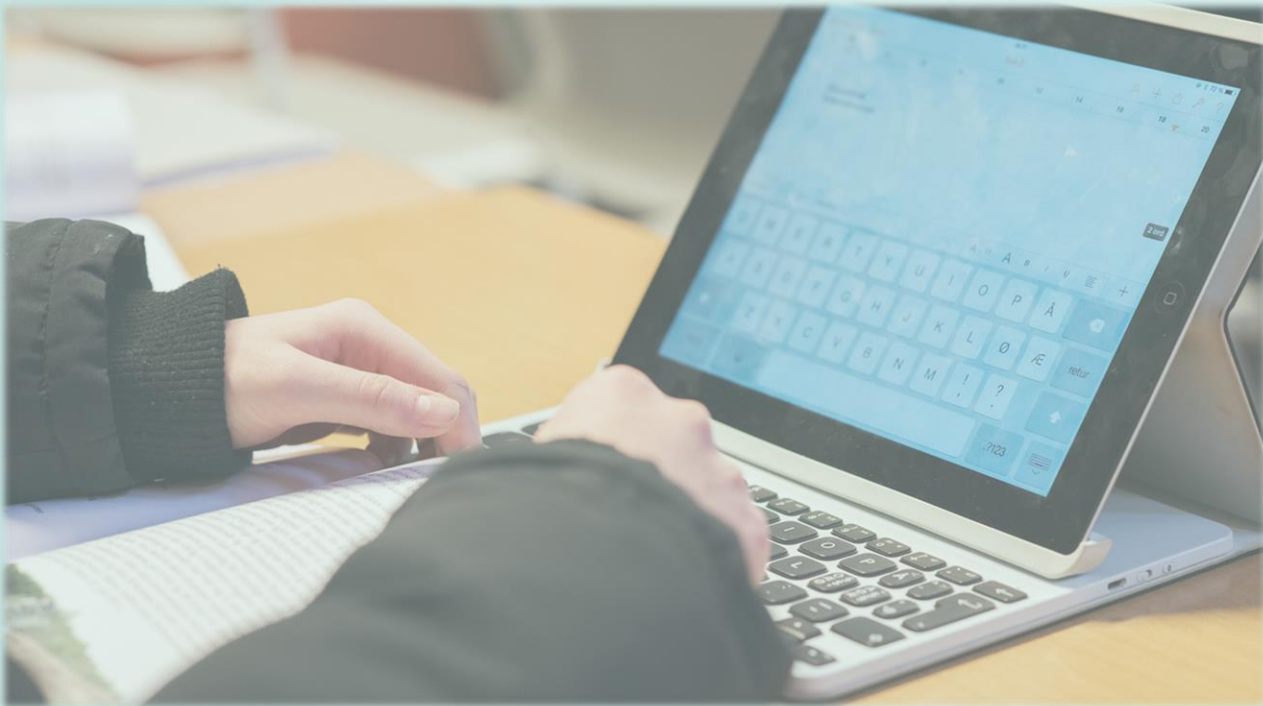
Basis for dialogue

- Selected results or indicators
 - Learning Environment
 - Learning Outcomes
 - Quitters
 - And more
- Statistics
 - Various sources
 - Different time perspectives
 - Different selections/groups



Annual student survey

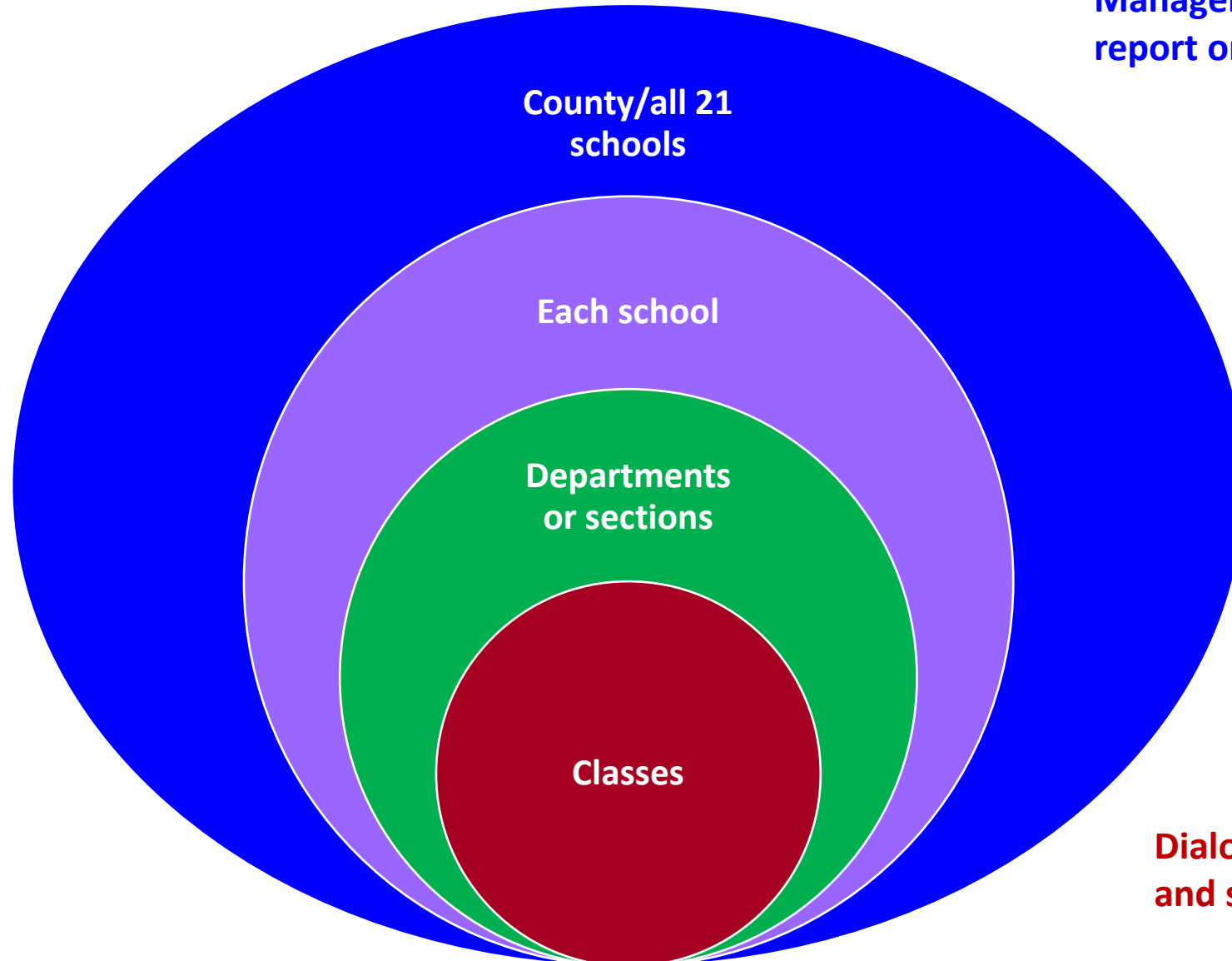




- A national student survey: By The National Directorate of Education
- Obligatory to arrange every autumn, but voluntary for the students to participate
- Autumn 2021
 - 13402 students were invited
 - 11130 participated
 - 83 %
- 58 questions on important topics related to the learning environment and the school in general
- Anonymous
- Numbers lower than 5 participants doesn't show



Following up the results



Management dialogue and statutory report on the state of education

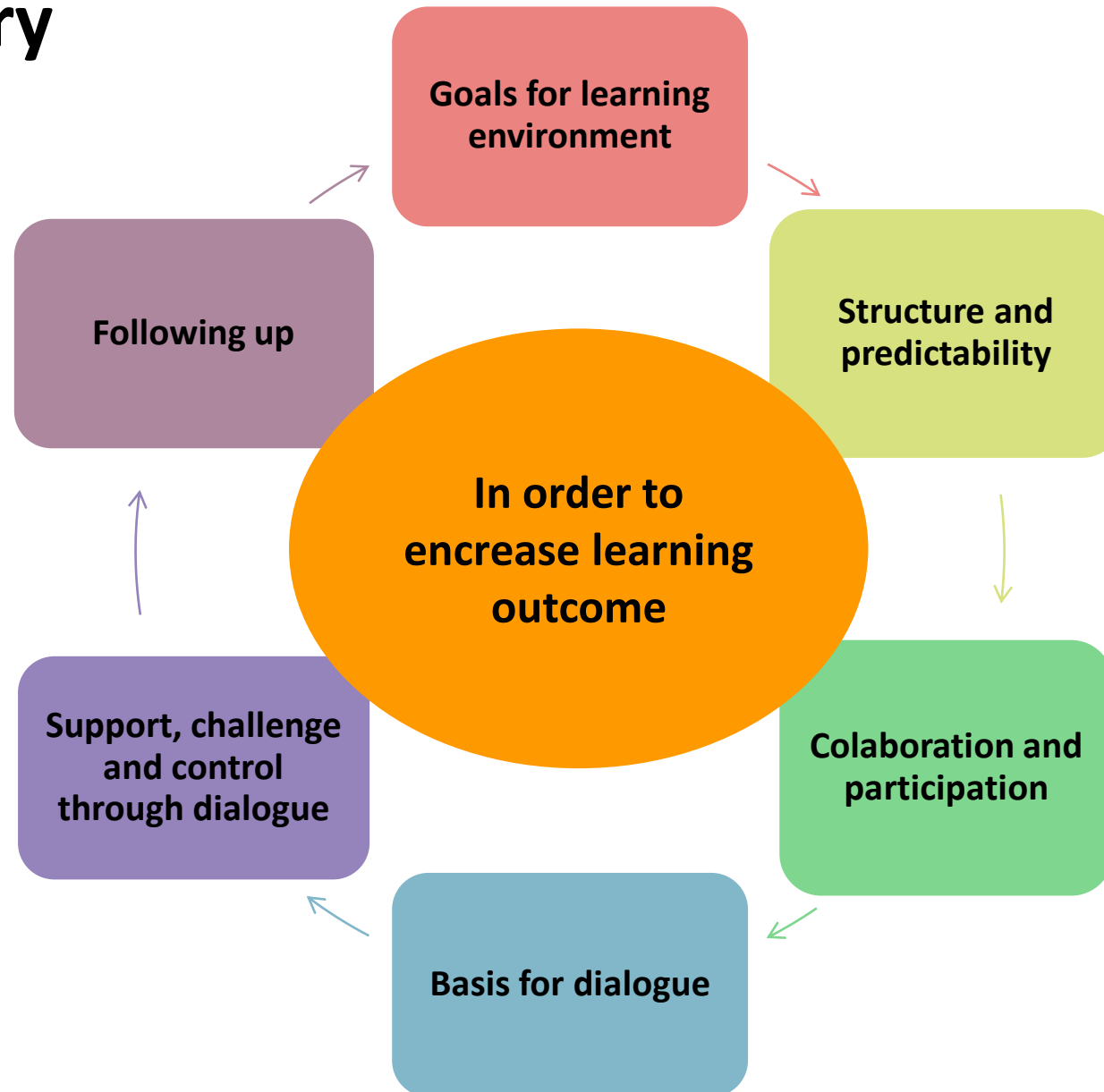
Dialogue between the Principal, the leaders of each department/sections, student council, school environment committee

Dialogue between the leaders of each department/section, the student council and the teachers

Dialogue between teachers and students



Short Summary





Vestfold og Telemark fylkeskommune

lillian.kaupang@vtfk.no

vtfk.no